

BRING ABOARD THE CHARM OF WIT & ARTISTRY

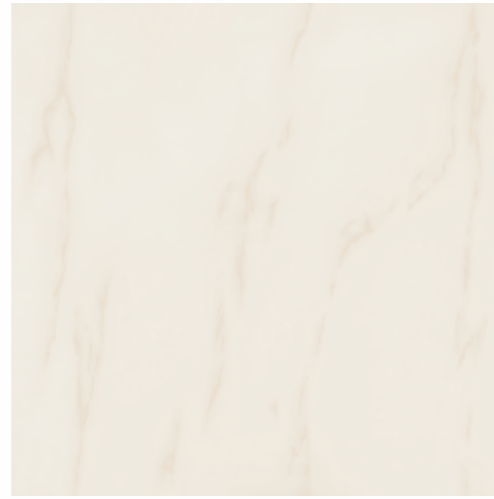


SOLUBLESALT
NANO POLISHED VITRIFIED TILES

600x600mm



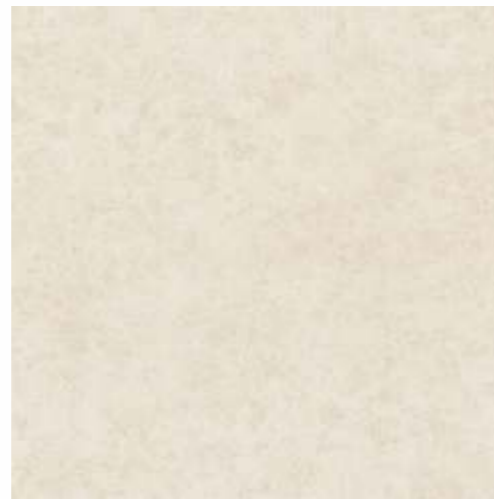
IPL-APOLLO ICE



IPL-ATHELON ICE



IPL-AVEDO ICE



IPL-BUCOVA ICE



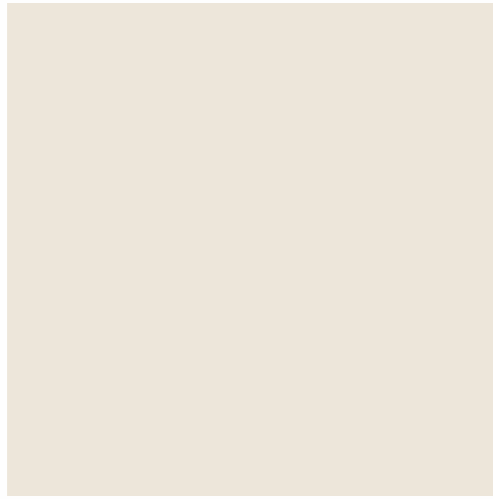
IPL-CHIEFON ICE



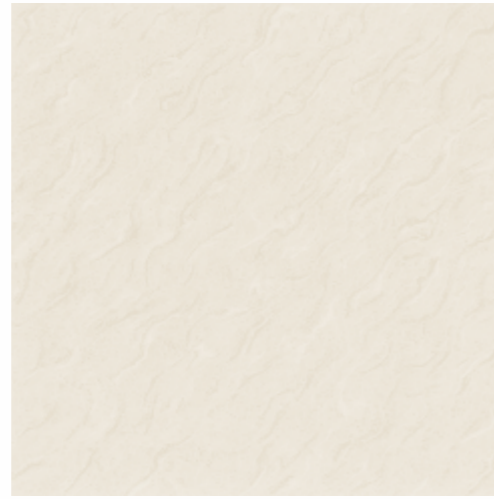
IPL-IRISH ICE



Tiles Shown: IPL-APOLLO ICE



IPL-IVORY ICE



IPL-LILLET ICE



IPL-MARFIL ICE



IPL-OLIVE ICE



IPL-ONYX ICE



IPL-OPTICA ICE



Tiles Shown: IPL-LILLET ICE



IPL-RUBY ICE



IPL-TORONTO ICE



IPL-VEMONT ICE



Tiles Shown: IPL-TORONTO ICE

TECHNICAL SPECIFICATION

CHARACTERISTIC			
DIMENSION & SURFACE QUALITY	INTERNATIONAL SPECIFICATIONS ISO 13006/EN 176 GROUP & IS 15622 : 2006	CRYSTAL VALUE	METHOD OF TESTING
■ Deviation In Length	± 0.6%	± 0.1%	ISO 10545 Pt2
✎ Deviation In Thickness	± 5%	± 2%	ISO 10545 Pt2
■ Straightness Of Sides	± 0.5%	± 0.1%	ISO 10545 Pt2
■ Rectangularity	± 0.6%	± 0.2%	ISO 10545 Pt2
↔ Surface Flatness	± 0.5%	± 0.2%	ISO 10545 Pt2
✦ Glossiness	—	Min. 80% Reflection	Glossmeter
PHYSICAL & THERMAL PROPERTIES			
👉 Water Absorption	< 0.5%	< 0.05%	ISO 10545 Pt3
✎ Mohs Hardness*	> 6	8	EN 101
✎ Flexural Strength	> 35N/mm ²	> 46 N/mm ²	ISO 10545 Pt4
🌀 Surface Abrasion Resistance	<175mm ³	<144mm ³	ISO 10545 Pt7
👉 Skid Resistance	> 0.4	≥ 0.4	ISO 10545 Pt17
📏 Breaking Strength	1113 N	2800 N	ISO 10545 Pt4
📏 Density (g/cc)	> 2.0	> 2.4	ISO 10545 Pt3
❄ Frost Resistance	Frost Proof	Frost Proof	ISO 10545 Pt9
☀ Thermal Shock Resistance	No Damage	No Damage	ISO 10545 Pt9
↔ Thermal Expansion	< 9 x 10 ⁻⁶	< 6 X 10 ⁻⁶	ISO 10545 Pt8
💧 Moisture Expansion	Nil	Nil	ISO 10545 Pt10
CHEMICAL PROPERTIES			
🧪 Chemical Resistance	No Damage	No Damage	ISO 10545 Pt13
☀ Colour Resistance	No Damage	No Damage	DIN 51094
👉 Stain Resistance	Resistant	Resistant	ISO 10545 Pt14

*Not applicable for glossy finishes

PACKING DETAILS

Size	No. of Tiles Per Box	Coverage Area in Sq. Mt.	Weight / Box
600x600mm	4	1.44	26 kg(Approx)

DISCLAIMER:

Crystal Ceramic Industries Pvt. Ltd. reserves the right to delete & amend either totally or partially, any of the colors, shapes, sizes, references and other technical specifications contained in this catalogue at anytime. The colors of tiles shown in this catalogue are purely illustrative and limited to printing process. Please refer actual sample before final selection. The details of sizes, colors, references should be verified for typographical errors. All Complaints need to be reported within 10 days of purchase. Always Follow instructions to avoid complaint due to bad masonry.



Life • Design • Innovation

CRYSTAL CERAMIC INDUSTRIES PVT. LTD.

Corporate Office: 101, 102, 103, Elanza Vertex, Sindhu Bhavan Road, B/h Armieda, Bodakdev, A'bad - 380 054, Gujarat. Mo.: +91 75748 90712/14/23/24

Factory: At. & Post: Kaiyal, Kaiyal Shedhavi Road, Tal.: Kadi, Dist.: Mehsana - 382 705, Gujarat.

Delhi Regional Office: 1105, Vikram Tower, Rajendra Palace, Delhi - 110 008. Tel.: +11 45120382, Mo.: +91 74283 53382

Bengaluru Regional Office: 874, Raineo House, Below SBI, Modi Hospital Road, Bas Vesh Wara Nagar, Bengaluru - 560 079. Mo.: +91 93792 04059

Mumbai Regional Office: P-31, Laxmi Industrial Estate, New Link Road, Andheri West, Mumbai - 400 053. Mo.: +91 93268 17988

e-mail: info@crystalceramic.com, website: www.crystalceramic.com

